



Ascotel IntelliGate 150/300

The future-proof communications system

Revolutionary demands on a modern communications system



The majority of companies operate in an extremely dynamic and hard-fought competitive market. Regular new orientation and a continuously improved customer service are two possibilities to maintain competitiveness. A decisive factor here is the smooth exchange of information with customers and partners. Communications solutions that adapt rapidly and flexibly to new requirements and permit efficient communications provide the necessary competitive edge.

We at Aastra would like to show you which aspects require particular attention when you are selecting a communications system.

Put your trust in future-proof systems

Presumably you have already formed a basic picture of what your future communications solution should look like. But do you also know how your requirements will develop over the coming years? In order to be able to cope also with future requirements, a technologically independent and flexibly usable solution offers the best protection for your investment.

» **Protect your independence**

Based upon the current technological change in communications technology, the move away from traditional line switched telephony (analog, ISDN) to voice transmission via the data network (Voice over Internet Protocol), the ability of a system to cope with the future has become of central importance. With a solution that encompasses a range of different technologies, you will always make the correct long-term selection. In this situation you can independently decide when you will give priority to which technology. A modern communications system should also possess an open system architecture in order to be able to maintain technological independence with regard to additionally available components and applications.

Your requirements determine the solution

Would you like to have a solution that adapts rapidly and flexibly to organisational and technological changes? Do you also appreciate a user-friendly and reliable configuration of your terminals and applications? In this case, please pay special attention to the expandability and scalability of your new system.

Mobility characterises our everyday life

Due to the increased level of mobility in everyday business life, the ability to network geographically separated branch offices and, for example, to suitably integrate field staff, is continually gaining in importance. Isolated solutions have had their day – what is

» **Take advantage of modern communications solutions**

required are communications systems that support employees in their tasks by providing the greatest level of freedom and flexibility and which give them the opportunity to define their availability based on their own individual preferences.

Ascotel IntelliGate 150/300

Adaptable like a Chameleon

Aastra develops communications systems that always adapt optimally to their operational environment.

With Ascotel IntelliGate 150/300, you have available two systems that in particular, are strongly characterised by their flexibility and integration ability.

The appropriate solution

The Ascotel IntelliGate 300 from Aastra has been specifically developed for the special communications requirements of small to medium-sized enterprises (SME). This innovative system is designed for up to 40 subscribers, or when operating solely with VoIP even up to 50 subscribers. Companies and organisations with up to 10 employees will find that the Ascotel IntelliGate 150 is the ideal solution.

» Extensive, powerful basic version

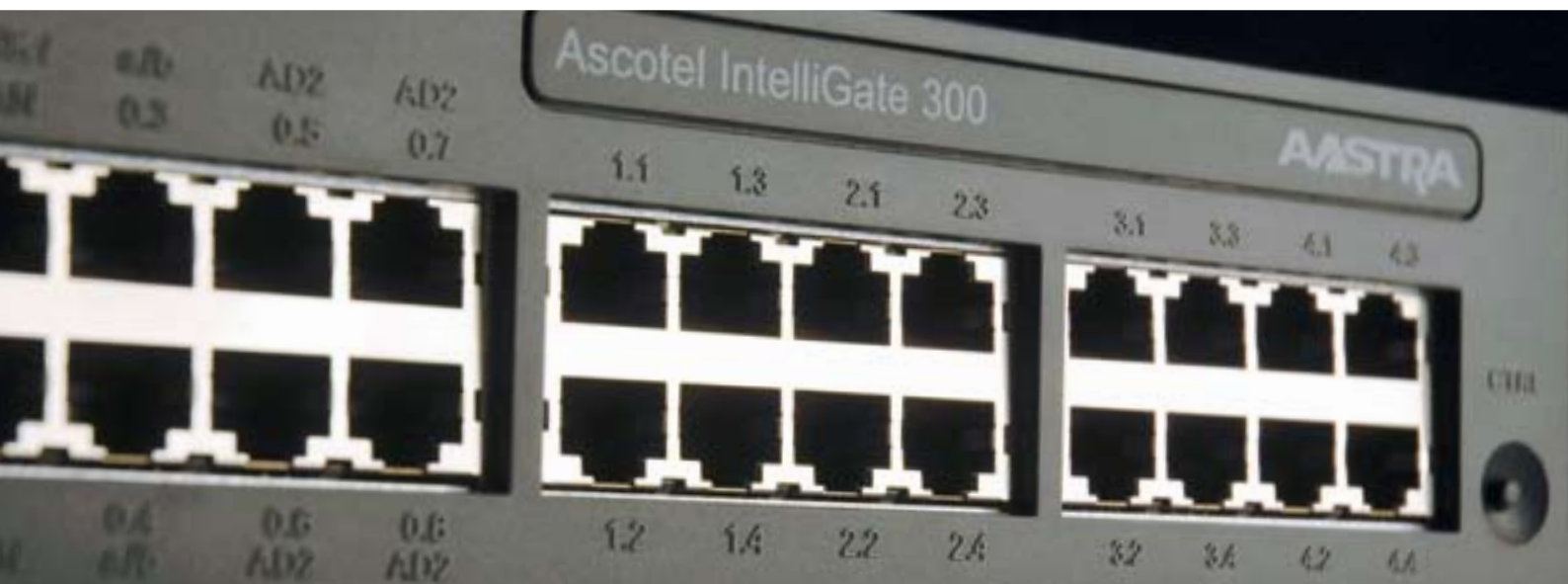
Most of the functions are already available with the basic version. Use of VoIP, fully integrated mobile DECT telephony, announcements prior to call acceptance, music on hold and voicemail for every subscriber, are all part of the extensive standard package.

Prepared for the future

The hybrid system design of the Ascotel IntelliGate 150/300 ensures that in addition to traditional telephony (analog, ISDN), the new innovative voice over data network (VoIP) is also available.

» A safe bet with hybrid solutions

Are you still unsure about converting completely to VoIP? Take advantage of the possibility to operate in a mixed mode by combining traditional technology with VoIP. This allows you to determine for yourself the speed-of-change and the extent-of-use of the respective technology. Ascotel IntelliGate 150/300 guarantees the fulfilment of both today's and tomorrow's requirements, even if you are still not fully aware of what your future requirements are.



System characteristics



Network your company

The interconnection of remote company sites, home workplaces and field employees are amongst the strengths of the Ascotel IntelliGate 150/300. Voice transmission takes place either over the traditional public switched telephone network (PSTN) or via broadband data networks (LAN, WAN). Regardless of their actual whereabouts, your employees have all the functions and services available that they would have at the company's headquarters.

» Take advantage of clear cost savings through VoIP

The rapid transfer to VoIP is today particularly attractive for those companies that have a high level of voice traffic between geographically separated company sites. With VoIP, you telephone cost-free throughout the entire internal communications network. Even networking with the Ascotel IntelliGate 20x5 system family functions without problems. The expansion of an existing Ascotel IntelliGate Network (AIN) with an Ascotel IntelliGate 150/300 can be done at any time. Connections to third-party systems are implemented via the QSIG interface.

React immediately to changes within your organisation

Projects that have to be executed quickly are today a feature of many companies. Often this means changes within the work areas and project teams. The modular design of the Ascotel IntelliGate 150/300 permits amendments to be made with minimal effort.

» A system to match your requirements

Additional subscribers and features can either be integrated easily into the system using expansion cards or can be activated by licences. The plug-and-play capability additionally ensures rapid and trouble-free installation.



Flexible types of mounting

The Ascotel IntelliGate 150/300 can be wall-mounted or fitted into a 19" rack. Thanks to the consistent equipping with RJ45 connectors, seamless integration in a universally wired building is guaranteed. It can even be operated discretely and soundlessly in a normal office environment – no ventilator to disturb the peace and no obvious cables.

High economic efficiency

A fair purchase price and low operating costs form the cornerstones of the Ascotel IntelliGate 150/300. Carefully thought through project tools support rapid and efficient system integration right from the planning stage. The Least Cost Routing function ensures the most economic connection within the public network. When using VoIP you select the appropriate Service Provider dependent upon SIP-based criteria. This allows operating costs to be decreased significantly. Hence, over a period of many years you can always use the most powerful and simultaneously most economical communications solution.

» Excellent price/performance ratio

The Return on Investment (ROI) for the system is further improved thanks to the increased employee productivity and the efficient customer service. Naturally, you can also reduce the purchase price by continuing to use existing Ascotel Office telephones.

Changeover made easy

As an Ascotel 200 customer you profit in a number of ways when you change over to the new Ascotel IntelliGate 150/300. In addition to the installed terminals you can also use existing plug-in cards and take advantage of the new possibilities.



Terminals and applications



Terminals and applications specifically matched to your working environment round off the Ascotel IntelliGate 150/300. Make your selection from Astra's extensive portfolio of user-friendly and high performance terminals and applications.

Convenience right across the board

The high-quality Office terminals of the Ascotel IntelliGate family are characterised by outstanding voice quality, a clear display and easily understood and intuitive user guidance. The ingenious Foxkey, a central operating element that is always adapted to the current situation, guides you context-related through the menu lists. Hence you can always select the desired function unerringly.

Astra offers you the appropriate terminal for every working environment. For areas within the company with a reduced

» The ideal terminal for your working environment

requirement for communications, for example workshops and conference rooms, right through to call-intensive secretarial services and attendant positions. And the elegant and slim design fits optimally into the respective working environment.

The interface between your employees

Efficient communication between the employees plays a significant role in improving performance. Take advantage of the numerous possibilities for improving cooperation within the team. Team display, automatic call back, name dialling and conference call are but a few of the many practical functions.

Remain accessible even when you are away from your workplace

Using the DECT terminals specifically designed for mobile use, you can be reached anywhere on the company's premises.

» Experience mobile freedom

It goes without saying that your trusted GSM mobile telephone can also be integrated into the communications system. Thus from now on, you can always be contacted via a single telephone number. WLAN telephones can also be used on your radio-based local network. If an occasion arises where you do not want to be disturbed, the flexibly programmable automatic call switch (Auto Attendant) takes over the switching through of calls.

Tailor-made applications for your company's communications

Optimise your communication processes using tailor-made and high-performance applications. Aastra offers you a comprehensive selection of proprietary software products and certified third-party applications. CTI (Computer Telephone Integration), UMS (Unified Messaging Systems), alarm generation and Call Center solutions facilitate the professional management of incoming and outgoing calls and increase your employees' efficiency.

» Impress your customers with innovative services

Innovative CTI solutions permit you to integrate existing contact databases (e.g. Microsoft® Exchange, Microsoft® Outlook®) and telephone book CDs with the telephony functions. Hence even before the call is accepted, you have all the contact data for your customer clearly displayed on the screen. You can thus adapt your greeting in a professional manner and document and process the enquiry.

Configuration assistant

From now on, the initial commissioning of the system can be done without having to attend special training courses or having to spend boring hours studying the operating manuals. Aastra's Configuration Assistant, which is included in the standard package, offers extensive support.

» Non-professionals also have no problem

The clearly laid out menu guidance takes you step by step through the most important configuration areas. If in spite of this a question remains unanswered, or you would like to take advantage of the full performance and flexibility of the system, your trained service contact or specialist supplier can provide you with the necessary competent support.

Security and quality are of prime importance to you. For us as well!

Communication is the lifeblood of many organisations. Faults within the business-critical applications can result in serious effects on the success of the business and the reputation of the company.

» Security has priority

Aastra products are subjected to the most rigorous of quality standards and are checked by independent test institutes for their faultless and stable operation. The large number of installed systems and the customers' satisfaction are the result of our comprehensive competence and many years' of experience.

Take advantage of our know-how

The installation of a new communications system should always be preceded by a careful analysis of the current situation and the actual requirements. Based on this investigation, the desired system solution can be precisely defined and the resulting productivity potential can be exploited to the full.

» Aastra, your reliable partner

Partners that have been carefully chosen and trained by Aastra, guarantee with their professional services the trouble-free and efficient implementation of the system. It goes without saying that our service partners are also available with their extensive knowledge to provide you with support during operation of the system.

Do you need more information?

You can obtain additional information about our products on the Aastra Home Page or from your Aastra sales partner.

Ascotel IntelliGate benefits and options:

Future-oriented communications platform with integrated Voice over IP (VoIP) functionality
Suitable for companies from all sectors
Modular expansion and upgrade path
Optimised everyday use thanks to a broad range of terminals with intuitive user guidance
Wide range of advanced features and team functions for efficient working
Compact design telephone handset range
Direct connection of IP telephone terminals
Fully integrated cordless telephony (DECT) for availability throughout the company's premises
Possibility to integrate external terminals (e.g. mobile telephones) as internal subscribers
Support of Voice over Wireless LAN-Components
SIP compatible for trunk lines and terminals
Integrated, highly-functional voice mail system
Integrated automatic call switching (Auto Attendant)
Call-Center
CTI functions: Name selection, Clip display, Microsoft® Outlook® calendar notification on Office telephones
E-mail notification of waiting voice messages
Link to external directories/contact databases (e.g. Microsoft® Exchange, Microsoft® Outlook®, telephone book CD)
Alarm generation solutions (e.g. in production environments)
Flexible linking of a wide range of third-party applications via standardised interfaces (TAPI, Corba)
Fully featured transparent networking for up to 11 systems or sites using Voice over IP (applies to Ascotel IntelliGate 300 only)
Efficient system management
Remote maintenance/remote alarm system possible
Flexible wall and rack mounting

Basic configuration of

Ascotel IntelliGate	150	300
Slots for expansion cards	2	4
Interfaces for Office system terminals	2	4
Interfaces for analog terminals	2	2
Inputs for music source	1	1
System interface LAN	2	2
Standard Voice Mail	integrated	integrated
DECT mobile telephony	integrated	integrated
Voice over IP (VoIP)	integrated	integrated

Maximum configuration of

Ascotel IntelliGate	150	300
Total No. of subscribers	10	50
Total No. of Office corded system terminals	10	42
System terminals Office (Non-IP)	10	40
Analog terminals	10	18
ISDN terminals (2 per S-Bus)	10	24
IP terminals	10	50
DECT terminals	10	50
DECT radio cells		
4 channel / 8 channel	6 / 3	20 / 10
Total No. of subscriber interfaces	12	22
Subscribers AD2 / a/b / S0	10 / 10 / 6	20 / 18 / 12
LAN ports optional	8	16
Total No. of trunk interfaces	4	8
Digital trunk interfaces T0 (2B)	4	8
Analog trunk interfaces	4	8
Simultaneous SIP providers	10	10

With the compliments of your telecoms specialist:

Certified Quality System



ISO 9001/EN 29001
Reg. No. 10318-03



Ascotel and IntelliGate are trademarks of Aastra.
Microsoft, Windows and Outlook are registered trademarks of Microsoft Corporation.

Aastra Telecom Schweiz AG
Ziegelmattestrasse 1
CH-4503 Solothurn
T +41 32 655 33 33
F +41 32 655 33 55
www.aastra.com

Aastra Telecom (UK) Limited
Unit B3, Armstrong Mall
Southwood Business Park
Farnborough
Hampshire GU14 0NR
T +44 (0)870 300 3435
F +44 (0)1252 532 101
www.aastra.co.uk
info.uk@aastra.com

Other companies and subsidiaries in:
Austria, Belgium, Cyprus, Denmark,
Finland, France, Germany, Holland,
Italy, Norway, Portugal, Spain, Sweden.

